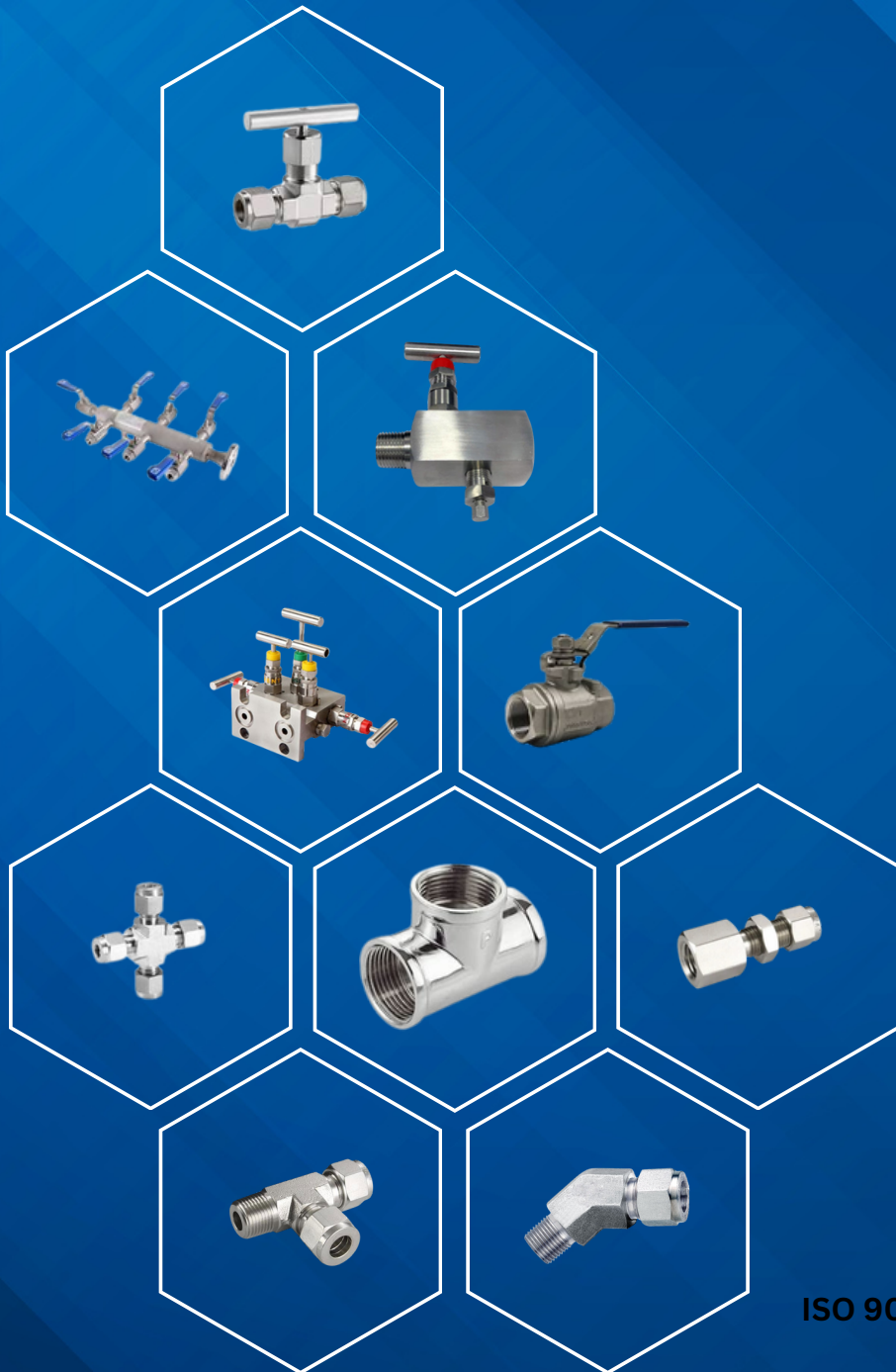




VALVES & FITTINGS



COSMOS

VALVES & FITTINGS

ISO 9001:2015 Quality Management System

High Performance Instrumentation Product



About

COSMOS An ISO 9001: 2008 Certified Company, manufactures high quality Steel Tube Fittings, Instrumentation Fittings and Instrumentation Valves, Valve Manifold suitable for Instrumentation, Hydraulic & Pneumatic applications in different sizes and metals such as Stainless Steel, Duplex Steel, Titanium, Inconel, Monel, Hastelloy and other materials according to customer's request for industries like Gas Refineries, Fertilizer Fields, Automobile, Chemical Petrochemical Fields, Oil & Gas, Nuclear, Power Generation Plants, Pharmaceutical Industries, Marine Industries, Packing, Energy Power Plant & Printing industries etc.

Quality At : COSMOS

Being an ISO Industry a Leader in Manufacturing Tube & Fittings along with Instrumentation Fittings, we have achieved an enviable position in the Global Market because of our commitments towards delivering an Excellent Product range, we have a team of quality controllers, which is highly efficient and experienced in this domain. Our quality controllers also conduct an in-depth quality check of various parameters at our ends to ensure the conformity of our range with international standards.

we take pride in offering you Excellent Quality Products. Anything less that does not leave our premises, thanks to our state of the art quality check facility

Our quality check process is conducted on the basis of following parameters: Durability

- High Tensile Strength
- Corrosion Resistance
- Compact Design
- Dimensional Accuracy



📍 2/26, Nahar Singh Industrial Estate, Ram Mandir Road, Goregoan (W), Mumbai - 400 104.

☎ Suleman Sakri : +91 70219 84169

☎ javed sunsara : +91 96199 88079

✉ cosmos@gmail.com



Application Industries

- Aerospace & Aircraft System
- Agriculture Machinery Equipments
- Analyzer-Lab & Testing Equipments
- Automation Machinery
- Automobile & Heavy Mobile
- Vehicles Car Care Systems
- Cement Industries Machinery
- Chemical Machinery
- Cooling n Heating Systems
- Locomotive & Railways
- Food & Beverages Equipments
- Fuel Cells Components
- Hydraulics Press & Power Packs
- Hydrostatic Drive System
- Industrial Mining Equipments
- Life Sciences
- Machine Tools Application
- Marine Projects
- Material Handling Stores
- Military
- Multi-Parking Systems
- Off-shore Engineering
- Oil Mill Plants
- Oil & Gas Industries
- Packaging Equipments
- Paint Industries
- Plastic/Rubber Processing Industries
- Pollution Control Equipments
- Power Generation Systems
- Pulp Paper Machinery
- Refineries
- Steel Plant & Rolling Mills Mfg.
- Super Market Storage & Rack System
- Energy Power Plant

MALE CONNECTOR

End Connections : TOD x MPT

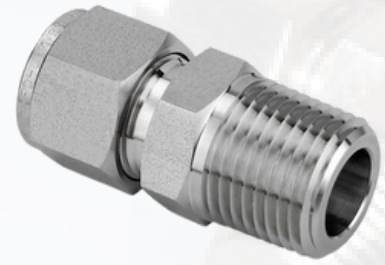
Tube OD Size (TOD) : From 1/16" OD to 2" OD (Fractional) From 3mm OD to 38mm OD (Metric)

Male Pipe Thread Size (MPT): 1/8" to 2" NPT (Taper) Threads (BSPP/ BSPT/ ISO/ Metric or any other types upon request)

Type : Double ferrule design with nut (Single ferrule optional)

MOC : SS316, 304/ Brass/ Alloy 400, 600, C276/ CS/ PTFE etc

Model No Designator (*) : MOC*-MC-TOD*-MPT*



MALE ELBOW 90 DEG

End Connections : TOD x MPT

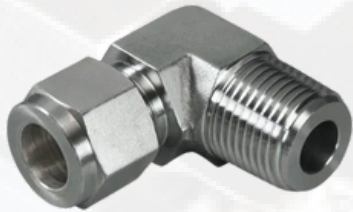
Tube OD Size (TOD) : From 1/8" OD to 1.5" OD (Fractional) From 3mm OD to 38mm OD (Metric)

Male Pipe Thread Size (MPT): 1/8" to 1.5" NPT (Taper) Threads (BSPP/ BSPT/ ISO/ Metric or any other types upon request)

Type : Double ferrule design with nut (Single ferrule optional)

MOC : SS316, 304/ Brass/ Alloy 400, 600, C276/CS/ PTFE etc

Model No Designator (*) : MOC*-ME-TOD*-MPT



MALE ELBOW 45 DEG

End Connections : TOD x MPT

Tube OD Size (TOD) : From 1/8" OD to 1.5" OD (Fractional) From 3mm OD to 38mm OD (Metric)

Male Pipe Thread Size (MPT): 1/8" to 1.5" NPT (Taper) Threads (BSPP/ BSPT/ ISO/ Metric or any other types upon request)

Type : Double ferrule design with nut (Single ferrule optional)

MOC : SS316, 304/ Brass/ Alloy 400, 600, C276/CS/ PTFE etc

Model No Designator (*) : MOC*-ME-TOD*-MPT



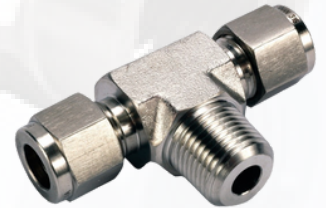
MALE RUN TEE



| | |
|------------------------------|--|
| End Connections : | TOD x MPT x TOD |
| Tube OD Size (TOD) : | From 1/8" OD to 1.5" OD (Fractional) From 3mm OD to 38mm OD (Metric) |
| Male Pipe Thread Size (MPT): | 1/8" to 1.5" NPT (Taper) Threads (BSPP/ BSPT/ ISO/ Metric or any other types upon request) |
| Type : | Double ferrule design with nut (Single ferrule optional) |
| MOC : | SS316, 304/ Brass/ Alloy 400, 600, C276/ CS/ PTFE etc |
| Model No Designator (*) : | MOC*-MRT-TOD1*-MPT*-TOD2* |

MALE BRANCH TEE

| | |
|------------------------------|--|
| End Connections : | TOD x TOD x MPT |
| Tube OD Size (TOD) : | From 1/8" OD to 1.5" OD (Fractional) From 3mm OD to 38mm OD (Metric) |
| Male Pipe Thread Size (MPT): | 1/8" to 1.5" NPT (Taper) Threads (BSPP/ BSPT/ ISO/ Metric or any other types upon request) |
| Type : | Double Ferrule Design with Nut (Single Ferrule Optional) |
| MOC : | SS316, 304/ Brass/ Alloy 400, 600, C276/ CS/ PTFE etc |
| Model No Designator (*) : | MOC*-MBT-TOD1*-TOD2*-MPT* |



MALE BULKHEAD CONNECTOR



| | |
|------------------------------|--|
| End Connections : | TOD x MPT |
| Tube OD Size (TOD) : | : From 1/8" OD to 2" OD (Fractional) From 3mm OD to 38mm OD (Metric) |
| Male Pipe Thread Size (MPT): | 1/8" to 2" NPT (Taper) Threads (BSPP/ BSPT/ ISO/ Metric or any other types upon request) |
| Type : | Double ferrule design with nut (Single ferrule optional) |
| MOC : | SS316, 304/ Brass/ Alloy 400, 600, C276/ CS/ PTFE etc |
| Model No Designator (*) : | : MOC*-MBH-TOD*-MPT* |

MALE TUBE ADAPTER

End Connections : MPT X TPE

Tube OD Size (TOD) : From 1/8" OD to 2" OD (Fractional) From 3mm OD to 38mm OD (Metric)

Male Pipe Thread Size (MPT): 1/8" to 2" NPT (Taper) Threads (BSPP/ BSPT/ ISO/ Metric or any other types upon request)

Type : Tube plain end suitable for swaging ferrules

MOC : SS316, 304/ Brass/ Alloy 400, 600, C276/ CS/ PTFE etc

Model No Designator (*) : MOC*-MTA-MPT*-TPE*



FEMALE CONNECTOR

End Connections : TOD x FPT

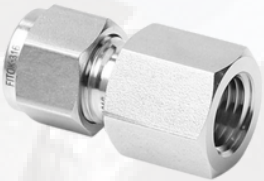
Tube OD Size (TOD) : From 1/16" OD to 2" OD (Fractional) From 3mm OD to 38mm OD (Metric)

Male Pipe Thread Size (MPT): 1/8" to 1.5" NPT (Taper) Threads (BSPP/ BSPT/ ISO/ Metric or any other types upon request)

Type : Double ferrule design with nut (Single ferrule optional)

MOC : SS316, 304/ Brass/ Alloy 400, 600, C276/ CS/ PTFE etc

Model No Designator (*) : MOC*-FC-TOD*-FPT*



FEMALE ELBOW 90 DEG

End Connections : TOD x FPT

Tube OD Size (TOD) : From 1/8" OD to 1.5" OD (Fractional) From 3mm OD to 38mm OD (Metric)

Male Pipe Thread Size (MPT): 1/8" to 1.5" NPT (Taper) Threads (BSPP/ BSPT/ ISO/ Metric or any other types upon request)

Type : Double ferrule design with nut (Single ferrule optional)

MOC : SS316, 304/ Brass/ Alloy 400, 600, C276/ CS/ PTFE etc

Model No Designator (*) : MOC*-FE-TOD*-FPT*



FEMALE RUN TEE



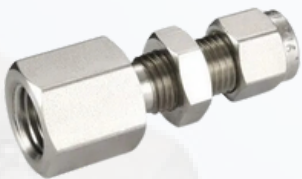
End Connections : TOD x FPT x TOD
Tube OD Size (TOD) : From 1/8" OD to 2" OD (Fractional) From 3mm OD to 48mm OD (Metric)
Male Pipe Thread Size (MPT): 1/8" to 1.5" NPT (Taper) Threads (BSPP/ BSPT/ ISO/ Metric or any other types upon request)
Type : Double ferrule design with nut (Single ferrule optional)
MOC : SS316, 304/ Brass/ Alloy 400, 600, C276/ CS/ PTFE etc
Model No Designator (*) : MOC*-FRT-TOD1*-FPT*-TOD2*

FEMALE BRANCH TEE



End Connections : TOD x TOD x FPT
Tube OD Size (TOD) : From 1/8" OD to 1.5" OD (Fractional) From 3mm OD to 38mm OD (Metric)
Male Pipe Thread Size (MPT): 1/8" to 1.5" NPT (Taper) Threads (BSPP/ BSPT/ ISO/ Metric or any other types upon request)
Type : Double ferrule design with nut (Single ferrule optional)
MOC : SS316, 304/ Brass/ Alloy 400, 600, C276/ CS/ PTFE etc
Model No Designator (*) : MOC*-FBH-TOD1*-TOD2*-FPT*

FEMALE BULKHEAD CONNECTOR



End Connections : TOD x FPT
Tube OD Size (TOD) : From 1/8" OD to 1.5" OD (Fractional) From 3mm OD to 38mm OD (Metric)
Male Pipe Thread Size (MPT): 1/8" to 1.5" NPT (Taper) Threads (BSPP/ BSPT/ ISO/ Metric or any other types upon request)
Type : Double ferrule design with nut (Single ferrule optional)
MOC : SS316, 304/ Brass/ Alloy 400, 600, C276/ CS/ PTFE etc
Model No Designator (*) : MOC*-FBH-TOD*-FPT*

FEMALE TUBE ADAPTOR

End Connections : FPT x TPE

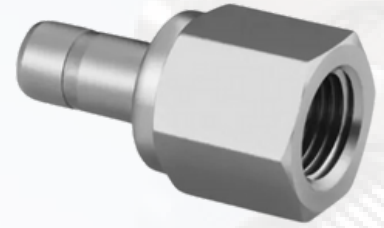
Tube OD Size (TOD) : From 1/16" OD to 2" OD (Fractional) From 3mm OD to 38mm OD (Metric)

Male Pipe Thread Size (MPT): 1/8" to 2" NPT (Taper) Threads (BSPP/ BSPT/ ISO/ Metric or any other types upon request)

Type : Tube Plain End suitable for swaging ferrules

MOC : SS316, 304/ Brass/ Alloy 400, 600, C276/ CS/ PTFE etc

Model No Designator (*) : MOC*-FTA-FPT*-TPE*



UNION TUBE STRAIGHT

End Connections : TOD x TOD

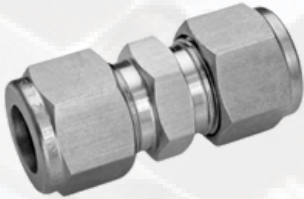
Tube OD Size (TOD) : From 1/6" OD to 2" OD (Fractional) From 3mm OD to 38mm OD (Metric)

Reducing Union of all combination available

Type : Double ferrule design with nut (Single ferrule optional)

MOC : SS316, 304/ Brass/ Alloy 400, 600, C276/ CS/ PTFE etc

Model No Designator (*) : MOC*-U-TOD1*-TOD2*



ELBOW UNION 90 DEG

End Connections : TOD XTOD

Tube OD Size (TOD) : From 1/8" OD to 2" OD (Fractional) From 3mm OD to 38mm OD (Metric)

Reducing Union of all combination available

Type : Double ferrule design with nut (Single ferrule optional)

MOC : SS316, 304/ Brass/ Alloy 400, 600, C276/ CS/ PTFE etc

Model No Designator (*) : MOC*-EU-TOD1*-TOD2*



TEE UNION 90 DEG

End Connections : TOD x TOD xTOD
Tube OD Size (TOD) : From 1/8" OD to 2" OD (Fractional) From 3mm OD to 38mm OD (Metric)

Reducing Union of all combination available

Type : Double ferrule design with nut (Single ferrule optional)
MOC : SS316, 304/ Brass/ Alloy 400, 600, C276/ CS/ PTFE etc
Model No Designator (*) : MOC*-TU-TOD1*-TOD2*-TOD3*



CROSS UNION

End Connections : TOD x TOD x TOD x TOD
Tube OD Size (TOD) : From 1/8" OD to 2" OD (Fractional) From 3mm OD to 38mm OD (Metric)

Reducing Union of all combination available

Type : Double ferrule design with nut (Single ferrule optional)
MOC : SS316, 304/ Brass/ Alloy 400, 600, C276/ CS/ PTFE etc
Model No Designator (*) : MOC*-CU-TOD1*TOD2*-TOD3*-TOD4*



BULK HEAD UNION TUBE

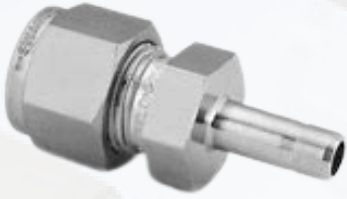
End Connections : TOD x TOD
Tube OD Size (TOD) : From 1/8" OD to 2" OD (Fractional) From 3mm OD to 38mm OD (Metric)

Reducing Union of all combination available

Type : Double ferrule design with nut (Single ferrule optional)
MOC : SS316, 304/ Brass/ Alloy 400, 600, C276/ CS/ PTFE etc
Model No Designator (*) : MOC*-BHU-TOD1*-TOD2*



REDUCER TUBE



End Connections : TOD x TPE
Tube OD Size (TOD) : From 1/8" OD to 2" OD (Fractional) From 3mm OD to 48mm OD (Metric)
Tube Plain End Size: From 1/8" OD to 2" OD (Fractional) From 3mm OD to 38mm OD (Metric)
Type : Tube Plain end suitable for swaging ferrules
MOC : SS316, 304/ Brass/ Alloy 400, 600, C276/ CS/ PTFE etc
Model No Designator (*) : MOC*-RT-TOD*-TPE*

PIPE BUTT WELD CONNECTOR



End Connections : TOD x PBW
Tube OD Size (TOD) : From 1/8" OD to 2" OD (Fractional) From 3mm OD to 38mm OD (Metric)
Pipe Butt Weld End Size: From 1/8" NB to 1.5" NB
Type : Double ferrule design with nut (Single ferrule optional)
MOC : SS316, 304/ Brass/ Alloy 400, 600, C276/ CS/ PTFE etc
Model No Designator (*) : MOC*-PBWC-TOD*-PBW*

END CLOSURE FOR TUBE



End Connections : TOD
Tube OD Size (TOD) : From 1/8" OD to 2" OD (Fractional) From 3mm OD to 38mm OD (Metric)
Type : Double ferrule design with nut (Single ferrule optional)
MOC : SS316, 304/ Brass/ Alloy 400, 600, C276/ CS/ PTFE etc
Model No Designator (*) : MOC*-ECT-TOD*

END CLOSURE FOR FITTING

| | |
|----------------------------------|---|
| End Connections : | TOD |
| Tube OD Size (TOD) : | From 1/8" OD to 2" OD (Fractional) From 3mm OD to 38mm OD (Metric) |
| Type : | Double ferrule design with nut (Single ferrule optional) |
| MOC : | SS316, 304/ Brass/ Alloy 400, 600, C276/ CS/ PTFE etc |
| Model No Designator (*) : | MOC*-ECF-TOD* |



SPARE NUT

| | |
|----------------------------------|--|
| End Connections : | TOD |
| Tube OD Size (TOD) : | From 1/16" OD to 2" OD (Fractional) From 3mm OD to 38mm OD (Metric) |
| Type : | Spare nut double ferrule (for single ferrule optional) |
| MOC : | SS316, 304/ Brass/ Alloy 400, 600, C276/ CS/ PTFE etc |
| Model No Designator (*) : | MOC*-SN-TOD* |



SPARE FERRULE SET

| | |
|----------------------------------|--|
| End Connections : | TOD |
| Tube OD Size (TOD) : | From 1/16" OD to 2" OD (Fractional) From 3mm OD to 38mm OD (Metric) |
| Type : | Spare nut double ferrule (for single ferrule optional) |
| MOC : | SS316, 304/ Brass/ Alloy 400, 600, C276/ CS/ PTFE etc |
| Model No Designator (*) : | MOC*-SF-TOD* |



ADDITIONAL PRODUCT RANGE

Products Complying Nace Specification
 All Products in MOC SS316L & SS304L
 Bore Through/ Thermocouple Connectors
 Port Connector
 O-Ring Seal Connector
 Pipe/ Tube socket Weld Connectors
 Gap Inspection Gauges

NEEDLE VALVE



End Connections : MPT /FPT
 Tube OD Size (MPT/FPT) : From 1/8" to 2" NPT (Taper) Threads (BSPP/BSPT/ISO/ Metric or any other types upon request)
 Needle Valve With panel mounting Arrangement on request
 Test Pressure: Up to 10000 psi
 Gland Packing: Standard PTFE (Grafoil for high temp)
 MOC SS316, 304/ Brass/ Alloy 400, 600, C276/ CS/ PTFE etc
 Model No Designator (*) : MOC*-NV-IN*-OUT*

NEEDLE VALVE TUBE X TUBE

End Connections : TOD x TOD
 Tube OD Size (MPT/FPT) : From 1/8" OD to 2" OD (Fractional) From 3mm OD to 38mm OD (Metric)

Needle Valve With panel mounting Arrangement on request

Test Pressure: Up to 10000 psi
 Gland Packing: Standard PTFE (Grafoil for high temp)
 MOC SS316, 304/ Brass/ Alloy 400, 600, C276/ CS/ PTFE etc
 Model No Designator (*) : MOC*-NV-IN*-OUT*



NEEDLE VALVE ANGLE



| | |
|-----------------------------------|--|
| End Connections : | MPT /FPT/TOD |
| Tube OD Size (TOD) : | From 1/8" OD to 2" OD (Fractional) From 3mm OD to 38mm OD (Metric) |
| Pipe Thread Size(MPT/FPT): | From 1/8" to 2" NPT (Taper) Threads (BSPP/BSPT/ISO/ Metric or any other types upon request) |
| Test Pressure: | Up to 10000 psi |
| Gland Packing: | Standard PTFE (Grafoil for high temp) |
| MOC | SS316, 304/ Brass/ Alloy 400, 600, C276/ CS/ PTFE etc |
| Model No Designator (*) : | MOC*-NV-IN*-OUT* |

NEEDLE VALVE WITH DRAIN

| | |
|-----------------------------------|--|
| End Connections : | MPT / FPT / TOD |
| Tube OD Size (MPT/FPT) : | From 1/8" to 2" NPT (Taper) Threads (BSPP/BSPT/ISO/ Metric or any other types upon request) |
| Pipe Thread Size(MPT/FPT): | From 1/8" to 2" NPT (Taper) Threads (BSPP/BSPT/ISO/ Metric or any other types upon request) |
| Test Pressure: | Up to 10000 psi |
| Gland Packing: | Standard PTFE (Grafoil for high temp) |
| MOC | SS316, 304/ Brass/ Alloy 400, 600, C276/ CS/ PTFE etc |
| Model No Designator (*) : | MOC*-NV-IN*-OUT* |



NEEDLE VALVE LOCKABLE

LOCKABLE TO ATTAIN CONSTANT FLOW OUTPUT



| | |
|--|---|
| Locking Arrangement : | By Allen Screw |
| End Connections : | TOD / FPT |
| Tube OD Size (TOD) : | From 1/8" to 1" OD (Fractional) From 3mm OD to 25mm OD (Metric) |
| Female Pipe Thread Size (FPT) : | 1/8" to 1" NPT (Taper) Threads (BSPP/ BSPT/ ISO/ Metric or any other types upon request) |
| Test Pressure : | Up to 10000 psi |
| Packing : | PTFE |
| MOC : | SS 316, 304 / Brass / Alloy 400, 600, C276 / CS etc |
| Model No Designator (*) : | MOC*-NV-IN*-OUT* |

BALL VALVE

| | |
|------------------------------------|--|
| End Connections : | TOD/FPT/MPT |
| Tube OD Size (MPT/FPT) : | From 1/4" OD to 1" OD (Fractional) From 6mm OD to 25mm OD (Metric) |
| Pipe Thread Size (FPT/MPT): | 1/8" to 2" NPT (Taper) Threads (BSPP/ BSPT/ ISO/ Metric or any other types upon request) |
| Test Pressure: | Up to 2000 psi |
| Packing: | PTFE |
| MOC | SS 316, 304/Brass / Alloy 400, 600, C276 / CS etc |
| Model No Designator (*) : | MOC-BV-IN-OUT |



BALL VALVE HIGH PRESSURE

| | |
|-------------------------------------|--|
| End Connections : | TOD/FPT/MPT |
| Tube OD Size (MPT/FPT) : | From 1/4" OD to 1" OD (Fractional) From 6mm OD to 25mm OD (Metric) |
| Pipe Thread Size (FPT/MPT) : | 1/8" to 1" NPT (Taper) Threads (BSPP/ BSPT/ ISO/ Metric or any other types upon request) |
| Test Pressure: | Up to 10000 psi |
| Packing: | PTFE (Optional Peek) |
| MOC : | SS 316, 304/Brass / Alloy 400, 600, C276 / CS etc |
| Model No Designator (*) : | MOC*-BVHP-IN*-OUT* |



BALL VALVE PANEL MOUNTING

| | |
|-------------------------------------|--|
| End Connections : | TOD/FPT/MPT |
| Tube OD Size (MPT/FPT) : | From 1/8" OD to 1" OD (Fractional) From 3mm OD to 25mm OD (Metric) |
| Pipe Thread Size (FPT/MPT) : | 1/8" to 1" NPT (Taper) Threads (BSPP/ BSPT/ ISO/ Metric or any other types upon request) |
| Test Pressure: | Up to 10000 psi |
| Packing: | PTFE (Optional Peek) |
| MOC : | SS 316, 304/Brass / Alloy 400, 600, C276 / CS etc |
| Model No Designator (*) : | MOC-BVPM-IN*-OUT* |



THREE WAY BALL VALVE



End Connections : TOD/FPT/MPT
 Tube OD Size (MPT/FPT) : From 1/8" OD to 1" OD (Fractional) From 3mm OD to 25mm OD (Metric)
 Pipe Thread Size (FPT/MPT): 1/8" to 1" NPT (Taper) Threads (BSPP/ BSPT/ ISO/ Metric or any other types upon request)
 Test Pressure: Up to 1000 psi
 Packing: PTFE (Optional Peek)
 MOC : SS 316, 304/Brass / Alloy 400, 600, C276 / CS etc
 Model No Designator (*) : MOC*-3BVPM-IN*-OUT1*-OUT2*

MULTI WAY BALL VALVE

End Connections : TOD/FPT/MPT
 Tube OD Size (MPT/FPT) : From 1/8" OD to 1" OD (Fractional) From 3mm OD to 25mm OD (Metric)
 Pipe Thread Size (FPT/MPT) : 1/8" to 1" NPT (Taper) Threads (BSPP/BSPT/ISO/ Metric or any other types upon request)
 Test Pressure: Up to 30000 psi
 Packing: PTFE
 MOC : SS 316, 304/Brass / Alloy 400, 600, C276 / CS etc
 Model No Designator (*) : MOC*-MBV-IN*-OUT*



NON RETURN VALVE



End Connections : TOD/FPT/MPT
 Tube OD Size (TOD) : From 1/8" OD to 1" OD (Fractional) From 3mm OD to 38mm OD (Metric)
 Pipe Thread Size (FPT/MPT) : 1/8" to 2" NPT (Taper) Threads (BSPP/ BSPT/ ISO/ Metric or any other types upon request)
 Test Pressure: Up to 10000 psi
 Seal Ring : Viton/Neoprene / Silicon
 MOC : SS 316, 304/Brass / Alloy 400, 600, C276 / CS etc
 Model No Designator (*) : MOC-NRV-IN-OUT*

PRESSURE RELIEF VALVE

End Connections : TOD/FPT/MPT

Tube OD Size (TOD) : From 1/4" OD to 1° OD (Fractional) From 6mm OD to 25mm OD (Metric)

Pipe Thread Size (FPT/MPT): 1/8" to 1" NPT (Taper) Threads (BSPP/ BSPT/ ISO/ Metric or any other types upon request)

set Pressure: As Per Specification

Seal Ring : Viton/Neoprene / Silicon

MOC : SS 316, 304/Brass / Alloy 400, 600, C276 / CS etc

Model No Designator (*) : MOC*-PRV-IN*-OUT*



QUICK RELEASE COUPLING

End Connections : TOD/FPT/MPT

Tube OD Size (MPT/FPT) : From 1/4" OD to 1° OD (Fractional) From 6mm OD to 25mm OD (Metric)

Pipe Thread Size (FPT/MPT) : 1/8" to 1" NPT (Taper) Threads (BSPP/ BSPT/ ISO/ Metric or any other types upon request)

Type : Single Check Type / Double Check Type

MOC SS 316, 304/Brass / Alloy 400, 600, C276 / CS etc

Model No Designator (*) : MOC*-QRC-IN-OUT*



SWIVEL ADAPTOR

Used For Fixing Position of Component (Pressure Gauge / Valve etc) Without Rotating Component itself

Male End Conn. 1/8" to 1" NPT (Taper) Threads (BSPP/ BSPT/ ISO/ Metric or any other types upon request)

Female Swivel Conn. Parallel Threads (BSPP/ISO/METRIC/NPS etc)

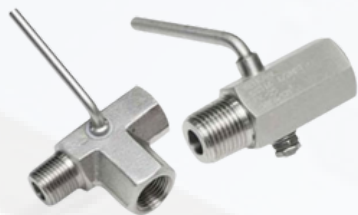
Type Sealing with Rubber O-Ring (Viton/Neoprene / Silicon)

MOC : SS 316, 304/Brass / Alloy 400, 600, C276 / CS etc

Model No Designator (*) : MOC*-SWA-MPT*-FPT*



GAUGE COCKS



Type : 2 Way or 3 Way

Pipe Thread Size (MPT/FPT) : From 1/8" to 1" OD NPT (Taper) Threads (BSPP/ BSPT/ ISO/ Metric or any other Types Upon Request)

Type : Hexagonal. All Combinations Available

Test Pressure : Up to 450 psi

MOC : SS 316, 304/Brass / Alloy 400, 600, C276 / CS etc

2 VALVE MANIFOLD R TYPE

End Connections : FPT

Female Pipe Thread Size (FPT): From 1/4" to 1/2" NPT (Taper) Treads (BSPP/ BSPT/ ISO/ Metric or any other types upon request)

Test Pressure : Up to 10000 psi

Packing : PTFE (Grafoil for high temp)

Type : Remote Mounting Type

MOC : SS 316, 304/Brass / Alloy 400, 600, C276 / CS / PTFE etc

Model No Designator (*) : MOC*-2VMR-IN*-OUT*-DRAIN*



2 VALVE MANIFOLD T TYPE



End Connections : FPT x Transmitter Flange

Female Pipe Thread Size (FPT): From 1/4" to 1/2" NPT (Taper) Treads (BSPP/ BSPT/ ISO/ Metric or any other types upon request)

Out / Process Conn. Transmitter Flange (TF)

Test Pressure : Up to 10000 psi

Packing : PTFE (Grafoil for high temp)

Type : Transmitter Mounting Type (With PTFE Seal Ring & 2 Bolts)

MOC : SS 316, 304/Brass / Alloy 400, 600, C276/CS/PTFE etc

Model No Designator (*) : MOC*-2VMT-IN*-TF-DRAIN*

3 VALVE MANIFOLD R TYPE

End Connections : FPT
Female Pipe Thread Size (FPT): From 1/4" to 1/2" NPT (Taper) Treads (BSPP/ BSPT/ ISO/ Metric or any other types upon request)
Test Pressure : Up to 10000 psi
Packing : PTFE (Grafoil for high temp)
Type : Remote Mounting Type
Available with Drain Plugs as Optional
MOC : SS 316, 304/Brass / Alloy 400, 600, C276 / CS / PTFE etc
Model No Designator (*) : MOC*-3VMR-IN*-OUT*



3 VALVE MANIFOLD T TYPE

End Connections : FPT x Transmitter Flange
Female Pipe Thread Size (FPT): From 1/4" to 1/2" NPT (Taper) Treads (BSPP/ BSPT/ ISO/ Metric or any other Types Upon Request)
Out / Process Conn. Transmitter Flange (TF)
Test Pressure : Up to 10000 psi
Packing : PTFE (Grafoil for high temp)
Type : Transmitter Mounting Type (With PTFE Seal Rings & 4 Bolts) Available with Drain Plugs as Optional
MOC : SS 316, 304/Brass / Alloy 400, 600, C276 / CS / PTFE etc
Model No Designator (*) : MOC*-3VMT-IN*-TF



5 VALVE MANIFOLD R TYPE

End Connections : FPT
Female Pipe Thread Size (FPT): From 1/4" to 1/2" NPT (Taper) Treads (BSPP/ BSPT/ ISO/ Metric or any other types upon request)
Test Pressure : Up to 10000 psi
Packing : PTFE (Grafoil for high temp)
Type : Remote Mounting Type
MOC : SS 316, 304/Brass / Alloy 400, 600, C276/CS/PTFE etc
Model No Designator (*) : MOC*-5VMR-IN-OUT-DRAIN*



5 VALVE MANIFOLD T TYPE

End Connections : FPT x Transmitter Flange
Female Pipe Thread Size (FPT): From 1/4" to 1/2" NPT (Taper) Treads (BSPP/ BSPT/ ISO/ Metric or any other types upon request)
Out / Process Conn. Transmitter Flange (TF)
Test Pressure : Up to 10000 psi
Packing : PTFE (Grafoil for high temp)
Type : Transmitter Mounting Type (With PTFE Seal Rings & 4 Bolts)
MOC : SS 316, 304 / Brass / Alloy 400, 600, C276/CS/PTFE etc
Model No Designator (*) : MOC*-5VMT-IN*-TF-DRAIN*



3 VALVE MANIFOLD H TYPE

End Connections : Transmitter Flange
Test Pressure : Up to 10000 psi
Packing : PTFE (Grafoil for high temp)
Type : Transmitter Mounting Type (With PTFE Seal Rings & 4 Bolts)
MOC : SS 316, 304 / Brass / Alloy 400, 600, C276/CS/PTFE etc
Model No Designator (*) : MOC*-3VMH-TF-TF



ADDITIONAL PRODUCT RANGE

PRODUCTS COMPLYING NACE SPECIFICATION
MONO FLANGE MANIFOLD VALVE
BLOCK & BLEED MANIFOLD VALVE
COPLANAR MANIFOLD VALVES
5 VALVE H TYPE MANIFOLD VALVES
BLEED PLUGS

AIR HEADERS

To Distribute Compressed Air

Type : Multiway Outlets (As Per Specification)

End Connections : TOD/FPT/MPT

Tube OD Size (TOD) : From 1/4"OD to 1" OD (Fractional) From 6mm OD to 25mm OD (Metric)

Pipe Thread Size (FPT/MPT) : 1/8" to 2" NPT (Taper) Threads (BSPP/ BSPT/ ISO/ Metric or any other Types Upon Request)

Type : Transmitter Mounting Type (With PTFE Seal Rings & 4 Bolts)

MOC :
 A) CS- Galvanized with CS/SS or Brass Valves or
 B) Complete SS with SS Valves (SS 304 or SS 316)

Header Pipe Size : From 1 to 4" (Seamless or ERW) Pipe

Thickness : As Per Spec such as Sch. 40/ Sch. 80/ Sch. 160/C Class

Inlet :
 A) RF/FF Flange (ANSI B 16.5) 1/2" to 3 or
 B) With Ball Valve of Size 1/4" to 2" or
 C) With Flange & Valve Both at inlet or
 D) With Valve & Three Piece Union at Inlet

Outlet/ Drain :
 A) Needle Valves (CS/Brass/SS304/SS316 etc.)
 B) Ball Valves (CS/Brass/SS304/SS316 etc.)
 C) Pipe Male/Female Open Threads

Test Pressure : Standard 20 kg/ cm. sq. (Hight Pressure Test offered)

Opposite Sides Outlet Pattern: Parallel or Zig Zag.
 Distance between Two outlets to be specified.
 Outlet Nipple Length to be specified.



HEX NIPPLE

End Connections : MPT X MPT
Male Pipe Thread Size (MPT) : From 1/8" to 2" NPT (Taper) Threads (BSPP/ BSPT/ ISO/ Metric or any other types upon request)

Test Pressure : Up to 10000 psi

Length : Standard short length (For specific length please inform)

Type : Hexagonal. Reducing Nipple of all Combinations Available.

MOC : SS 316, 304 / Brass / Alloy 400, 600, C276 / CS / PTFE etc

Model No Designator (*) : MOC*-HN-MPT1*-MPT2*

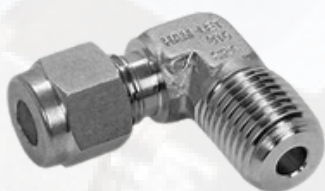


HEXA PLUG

| | |
|--------------------------------------|--|
| End Connections : | MPT |
| Male Pipe Thread Size (MPT) : | From 1/8" to 2" NPT (Taper) Threads (BSPP/ BSPT/ ISO/ Metric or any other types upon request) |
| Test Pressure : | Up to 10000 psi |
| Type : | Hexagonal. Square head plug upon request |
| MOC : | SS 316, 304 / Brass / Alloy 400, 600, C276 / CS / PTFE etc |
| Model No Designator (*) : | MOC*-HP-MPT* |



ELBOW MALE HEX



| | |
|--------------------------------------|--|
| End Connections : | MPT X MPT |
| Male Pipe Thread Size (MPT) : | From 1/8" to 1.5" NPT (Taper) Threads (BSPP/ BSPT/ ISO/ Metric or any other types upon request) |
| Test Pressure : | Up to 10000 psi |
| Type : | Hexagonal. 90 Degree reducing elbows in all combination available. |
| MOC : | SS 316, 304/Brass / Alloy 400, 600, C276 / CS / PTFE etc |
| Model No Designator (*) : | MOC*-HEM-MPT1*-MPT2* |

TEE MALE HEX

| | |
|--------------------------------------|--|
| End Connections : | MPT X MPT X MPT |
| Male Pipe Thread Size (MPT) : | 1/8" to 1.5" NPT (Taper) Threads (BSPP/ BSPT/ ISO/ Metric or any other types upon request) Reducing test in all combinations available. |
| Test Pressure : | Up to 10000 psi |
| MOC : | SS 316, 304/ Brass / Alloy 400, 600, C276 / CS / PTFE etc |
| Model No Designator (*) : | MOC*-HTM-MPT1*-MPT2*-MPT3* |



HEXA COUPLING



| | |
|--------------------------------------|---|
| End Connections : | FPT X FPT |
| Male Pipe Thread Size (MPT) : | 1/8" to 2" NPT (Taper) Threads (BSPP/ BSPT/ ISO/ Metric or any other types upon request) |
| Test Pressure : | Up to 10000 psi |
| Type : | Hexagonal. Reducing hex couplings also available. |
| Lenght : | Standard short length (For specific length please inform) |
| MOC : | SS 316, 304 / Brass / Alloy 400, 600, C276 / CS / PTFE etc |
| Model No Designator (*) : | MOC*-HC-FPT1*-FPT2* |

HEX CAP



| | |
|--|--|
| End Connections : | FPT |
| Female Pipe Thread Size (FPT) : | From 1/8" to 2" NPT (Taper) Threads (BSPP/ BSPT/ ISO/ Metric or any other types upon request) |
| Test Pressure : | Up to 10000 psi |
| Type : | Hexagonal. Reducing hex caps also available. |
| MOC : | SS 316, 304 / Brass / Alloy 400, 600, C276 / CS / PTFE etc |
| Model No Designator (*) : | MOC*-HCP-FPT* |

ELBOW FEMALE HEX



| | |
|--|--|
| End Connections : | FPT X FPT |
| Female Pipe Thread Size (FPT) : | From 1/8" to 1.5" NPT (Taper) Threads (BSPP/ BSPT/ ISO/ Metric or any other types upon request) |
| Type : | Hexagonal. 90 Degree reducing elbows in all combinations available. |
| Test Pressure : | Up to 10000 psi |
| MOC : | SS 316, 304/ Brass / Alloy 400, 600, C276 / CS / PTFE etc |
| Model No Designator (*) : | MOC*-HTM-MPT1*-MPT2*-MPT3* |

TEE FEMALE HEX

End Connections : FPT X FPT X FPT

Female Pipe Thread Size (FPT): From 1/8" to 1.5" NPT (Taper) Threads (BSPP/ BSPT/ ISO/ Metric or any other types upon request)

Test Pressure : Up to 10000 psi

MOC : SS 316, 304/Brass / Alloy 400, 600, C276/CS/PTFE etc

Model No Designator (*) : MOC*-HTF-FPT1*-FPT2*-FPT3*



CROSS FEMALE HEX

End Connections : FPT X FPT X FPT X FPT

Female Pipe Thread Size (FPT) From 1/8" to 1.5" NPT (Taper) Threads (BSPP/ BSPT/ ISO/ Metric or any other types upon request) Reducing cross in all combinations available.

Test Pressure : Up to 10000 psi

MOC : SS 316, 304 / Brass / Alloy 400, 600, C276 / CS / PTFE etc

Model No Designator (*) : MOC*-HCP-FPT*



HEX REDUCER

End Connections : MPT x FPT

Pipe Thread Size (MPT/FPT) From 1/8" to 2" NPT (Taper) Threads (BSPP/ BSPT/ ISO/ Metric or any other types upon request)

Type Hexagonal. All combinations available

Length Standard short length (for specific length please inform)

Test Pressure : Up to 10000 psi

MOC : SS 316, 304/Brass / Alloy 400, 600, C276/CS/PTFE etc

Model No Designator (*) : MOC*-HR-MPT*-FPT*



HEX ADAPTOR MALE X FEMALE



| | |
|-----------------------------------|--|
| End Connections : | MPT X FPT |
| Pipe Thread Size (MPT/FPT) | From 1/8" to 2" NPT (Taper) Threads (BSPP/ BSPT/ ISO/ Metric or any other types upon request) |
| Type | Hexagonal. All Combinations Available |
| Length | Standard short length (for specific length please inform) |
| Test Pressure : | Up to 10000 psi |
| MOC : | SS 316, 304 / Brass / Alloy 400, 600, C276 / CS / PTFE etc |
| Model No Designator (*) : | MOC-HA-MPT*-FPT* |

ELBOW MALE FEMALE HEX



| | |
|-----------------------------------|---|
| End Connections : | MPT X FPT |
| Pipe Thread Size (MPT/FPT) | 1/8" to 1.5" NPT (Taper) Threads (BSPP/ BSPT/ ISO/ Metric or any other types upon request) |
| Test Pressure : | Up to 10000 psi |
| Type | Hexagonal. 90 Degree reducing elbows in all combinations available. |
| MOC : | SS 316, 304/Brass / Alloy 400, 600, C276 / CS / PTFE etc |
| Model No Designator (*) : | MOC*-HEMF-MPT*-FPT* |

PIPE NIPPLE



| | |
|------------------------------------|--|
| End Connections : | MPT/PLAIN |
| Male Pipe Thread Size (MPT) | 1/8" to 3" NPT (Taper) Threads (BSPP/ BSPT/ ISO/ Metric or any other types upon request) |
| Type | Pipe Nipple. Schedule / Threaded Both Ends (TBE), Threaded One End (TOE), Plain Both Ends (PBE). Length to be specified. Pipe Schedule / Thickness to be specified. |
| Length | Standard short length (for specific length please inform) |
| Test Pressure : | Up to 10000 psi |
| MOC : | SS 316, 304/Brass / Alloy 400, 600, C276/CS/PTFE etc |
| Model No Designator (*) : | MOC*-HR-MPT*-FPT* |

PIPE COUPLING SCREWED

End Connections : FPT X FPT

Female Pipe Thread Size (FPT) From 1/8" to 2" NPT (Taper) Threads (BSPP/ BSPT/ ISO/ Metric or any other Types Upon Request)

Type Round as per ANSI B 16.11 Reducing coupling in all combinations available.

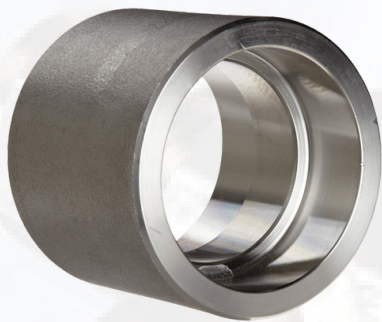
Pressure Class: Up to 9000 psi

MOC : SS 316, 304 / Brass / Alloy 400, 600, C276 / CS / PTFE etc

Model No Designator (*) : MOC*-PCS-FPT1*-FPT2*-CLASS



PIPE COUPLING SOCKET WELD



End Connections : SW X SW

Pipe Socket weld Size (PSW) From 1/8" to 2" NB

Type Round as per ANSI B 16.11 Reducing couplings in all combination. Socket weld to screwed coupling available upon request.

Pressure Class Up to 9000 psi

MOC : SS 316, 304/Brass / Alloy 400, 600, C276 / CS / PTFE etc

Model No Designator (*) : MOC*-HEMF-MPT*-FPT*

PIPE ELBOW SCREWED/SW(PE)

End Connections : FPT/SW

Female Pipe Thread Size (FPT) 1/8" to 2" NPT (Taper) Threads (BSPP/ BSPT/ ISO/ Metric or any other types upon request)

Socket Weld Pipe Size(SW) 1/8" to 3" NB

Type Round as per ANSI B 16.11.

Pressure Class Up to 9000 psi

MOC : SS 316, 304 / Brass / Alloy 400, 600, C276 / CS etc

Model No Designator (*) : MOC*-PE-SIZE1*-SIZE2*-CLASS



PIPE TEE SCREWED/SW (PT)



| | |
|--------------------------------------|---|
| End Connections : | FPT/SW |
| Female Pipe Thread Size (FPT) | 1/8" to 2" NPT (Taper) Threads (BSPP/ BSPT/ ISO/ Metric or any other types upon request) |
| Socket Weld Pipe Size(SW) | 1/8" to 3" NB |
| Type | Round as per ANSI B 16.11. |
| Pressure Class | Up to 9000 psi |
| MOC : | SS 316, 304 / Brass / Alloy 400, 600, C276 / CS etc |
| Model No Designator (*) : | MOC*-PT-SIZE1*-SIZE2*-CLASS |

PIPE UNION SCREWED/SW (PU)

| | |
|-----------------------------------|---|
| End Connections : | FPT/SW/MPT |
| Pipe Thread Size (FPT/MPT) | 1/8" to 2" NPT (Taper) Threads (BSPP/ BSPT/ ISO/ Metric or any other types upon request) |
| Socket Weld Pipe Size(SW) | 1/8" to 2" NB |
| Type | Hex. With Soft Seal (SS) or Metal to Metal Seal.(MM) |
| Pressure Class | Up to 9000 psi |
| MOC : | SS 316, 304 / Brass / Alloy 400, 600, C276/CS/PTFE etc |
| Model No Designator (*) : | MOC*-PU-SEAL TYPE*-SIZE1*-SIZE2-CLASS |



FLANGES

| | |
|------------------------|---|
| Type | Socket Weld, Slip On, Weld Neck, Blind, Screwed |
| Special Flanges | With half coupling of reducing size welded at centre |
| Face Type | RF/FF/ Tongue & Groove Type |
| Class | 150 to 2500 class |
| Specification | ANSI B 16.5 |
| MOC : | SS316, 304/ Alloy 400, 600, C276/ CS/ AS etc. |



CONDENSATE / SEAL POT (CP)

| | |
|-----------------------------------|---|
| End Connections : | FPT/SW |
| Pipe Size | 1.5" to 4" sch. 40 to Sch. XXS |
| Type | 3 Way / 4 Way. IBR certificate optional |
| Pipe Thread End Conn (FPT) | 1/4" to 2" NPT (Up to 9000 PSI) (BSPP/BSPT/ ISO/ Metric or any other types upon request) |
| Socket Weld Pipe Size(SW) | 1/4" to 2" NB (up to 9000 PSI) |
| Drain Plugs | Hex plugs provided optionally. Length of Pipe/Pipe Schedule to be Specified. |
| MOC | SS 316, 304 / Brass / Alloy 400, 600, C276 / CS etc |



SYPHON (SY)

| | |
|--------------------------------------|---|
| End Connections : | MPT/FPT/SW/PLAIN |
| Pipe Size | Up to 1/2" (Sch.40 to Sch. XXS) |
| Type | U Type, Q Type |
| Pipe Thread End Conn(FPT/MPT) | 1/4" to 1/2" NPT (UP to 9000 PSI) (BSPP/BSPT/ ISO/ Metric or any other types upon request) |
| Socket Weld End Conn Size(SW) | 1/4" to 1/2" NB (up to 9000 PSI) |
| MOC | SS 316, 304/CS/AS etc |



SNUBBER (SNB)

| | |
|--------------------------------|--|
| End Connections | MPT/FPT |
| Pipe Thread Size (FPT) | 1/8" to 1/2" NPT (Taper) Threads (BSPP/BSPT/ ISO/ Metric or any other types upon request) |
| Type | Hexagonal. All combinations available |
| Test Pressure | Up to 6000 psi |
| MOC | SS 316, 304 / Brass / Alloy 400, 600, C276 / CS |
| Model No Designator (*) | MOC*-SNB-INLET*-OUTLET* |



SS TUBING / IMPULSE TUBING SS PIPES

| | |
|------------------------|---|
| Tube Size | 1/16" OD to 2 OD |
| Pipe Size | 1/8" NB to 4" NB |
| Thickness/ Sch. | As Per Specification |
| Tube Grade | ASTM A 269/ ASTM A 213 (Soft Annealed) |
| Pipe Grade | ASTM A 312 |
| MOC | SS316, 304 /Alloy 400, 600, C276 / CS / AS etc |



PTFE TUBING / FITTINGS / VALVES

Range of Products Suitable for Highly Corrosive Applications
 PTFE Tube Suitable For Compression Type Fittings
 PTFE Compression Type Tube Fittings, With Nut/Ferrules.
 PTFE Needle Valves: For Low Pressure Application
 PTFE Manifold Valves: 2, 3 & 5 Valve. R/ T Type.
 PTFE Pipe Fittings: Nipple, Plug, Coupling etc
 PTFE Flanges
 Test Pressure: Up to 150 psi



ADDITIONAL PRODUCT RANGE

ALL PRODUCTS IN MOC SS316L & SS304L
 SCRD & SW FITTING COMPLETE RANGE (ANSI B 16.11)
 BUTT WELD PIPE FITTINGS (ANSI B 16.9)
 COPPER TUBE (BARE & WITH PVC INSULATION)
 SS TUBE WITH PVC INSULATION
 THEMOWELLS
 PRECISION MACHINED PARTS AS PER DRAWING
 O-RING FACE SEAL TYPE WELD FITTINGS & VALVES
 HYDRAULIC HOSE & FITTINGS



COSMOS

Valves & Fittings

ISO 9001:2015 Quality Management System



Contact Us

Address : 2/26, Nahar Singh Industrial Estate, Ram Mandir Road, Goregoan (W), Mumbai - 400104.

Phone Number : Suleman Sakri : +91 7021984169
Javed Sunsara : +91 9619988079

Email : cosmos@gmail.com